

Inlet filter, rear side "lock and shield" mounting

Standard- or Medical-Filter



Snap-In Version



Description

- Panel Mount:
Snap-in version from rear-side
- 3 Functions:
Appliance inlet Protection class I, with EMC-shield, Line filter in standard and medical version
- Alternative: version without line filter [GRF2](#)

Approvals

- VDE License Number: 102348
- UL License Number: E72928
- CSA License Number: 701867

Characteristics

- Time saving "Lock and Shield" snap-in design for rear-panel mounting
- All single elements are already wired
- Innovative EMC-shielding with flexible steel segments for an excellent contact to the panel
- Qualified for use in equipment according IEC/EN 60950

Other versions on request

- Panel thickness 1.2 mm and 2.0 mm
- With solder terminals

References

[General Product Information](#)

Weblinks

[Approvals](#), [RoHS](#), [CHINA-RoHS](#), [e-Store](#), [SCHURTER-Stock-Check](#), [Distributor-Stock-Check](#)

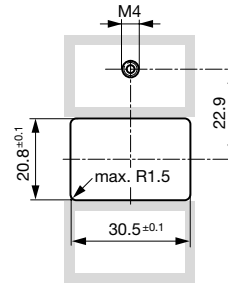
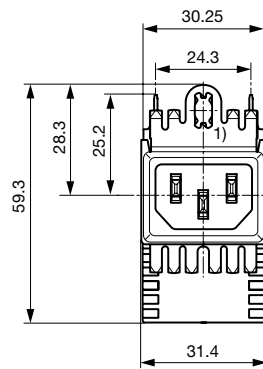
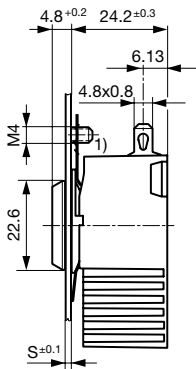
Technical Data

Ratings IEC	0.5 - 10A @ Ta 40 °C / 250VAC; 50Hz
Ratings UL/CSA	0.5 - 15A @ Ta 40 °C / 125VAC; 60Hz
Leakage Current	standard < 0.5mA (250 V / 60Hz) medical < 5 µA (250 V / 60 Hz)
Dielectric Strength	> 1.7 kVDC between L-N > 2.7 kVDC between L/N-PE Test voltage (2 sec)
Allowable Operation Temp.	-25 °C to 85 °C
Climatic Category	25/085/21 acc. to IEC 60068-1
Degree of Protection	from front side IP 40 acc. to IEC 60529
Protection Class	Suitable for appliances with protection class I acc. to IEC 61140
Terminal	Quick connect terminals 4.8 x 0.8 mm Solder terminal on request
Panel Thickness s	Snap-in: 1.5 mm (other on request)
Material: Housing	Thermoplastic, black, UL 94V-0

Appliance-Inlet/-Outlet	C14 acc. to IEC/EN 60320-1, UL 498, CSA C22.2 no. 42 (for cold conditions) pin-temperature 70 °C, 10A, Protection class I
Line Filter	Standard and Medical Version, IEC 60939, IEC 60601-1, UL 1283, UL 544, EN 133 200, CSA C22.2 no. 8 Technical details
MTBF	> 3'300'000h acc. to MIL-HB-217 F

Dimensions

GRF4



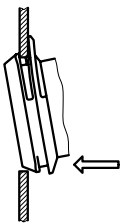
1) Terminal for earth screw M4

This area must be conductive for optimal shielding. Do not apply paint or coatings.

Technical Data of Filter-Components

Rated Current [A]	Filter-Type	Inductances L [mH]	Capacitance CX [nF]	Capacitance CY [nF]	R [MΩ]
0.5	Standard Version	2 x 24	100	2.2	-
1	Standard Version	2 x 12	100	2.2	-
3	Standard Version	2 x 2.5	100	2.2	-
6	Standard Version	2 x 0.78	100	2.2	-
10	Standard Version	2 x 0.225	100	2.2	-
15	Standard Version	2 x 0.075	100	2.2	-
0.5	Medical Version (M5)	2 x 24	100	-	1
1	Medical Version (M5)	2 x 12	100	-	1
3	Medical Version (M5)	2 x 2.5	100	-	1
6	Medical Version (M5)	2 x 0.78	100	-	1
10	Medical Version (M5)	2 x 0.225	100	-	1
15	Medical Version (M5)	2 x 0.075	100	-	1

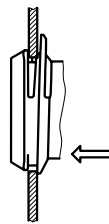
Mounting instructions



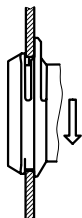
Step 1
Place the socket in the top edge of the panel cut-out



Step 2
Push the socket upwards



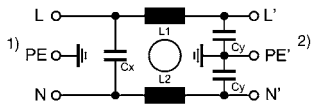
Step 3
Push the socket forward into the panel cut-out



Step 4
Release the socket. The component is self adjusting.

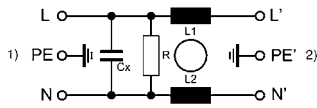
Diagrams

Standard version



1) Line
2) Load

Medical version



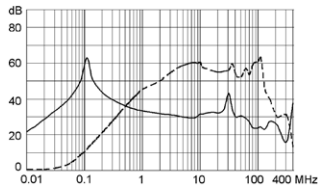
1) Line
2) Load

Attenuation Loss

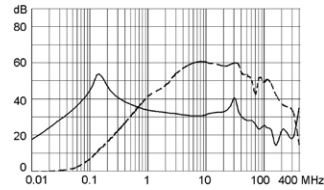
- - - differential mode _____ common mode

Standard version

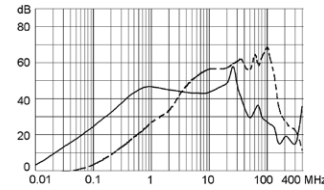
0.5 A



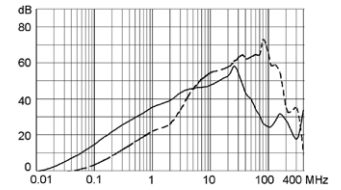
1 A



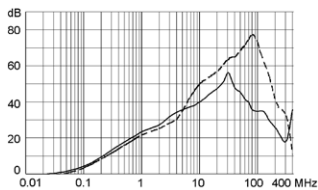
3 A



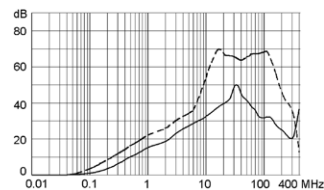
6 A



10 A

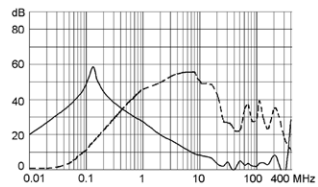


15 A

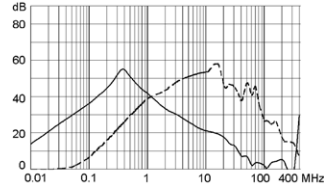


Medical version (M5)

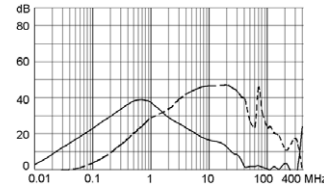
0.5 A



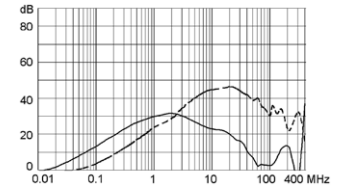
1 A



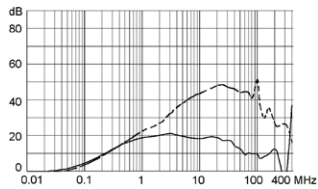
3 A



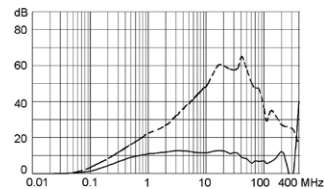
6 A



10 A



15 A



Distributor-Stock-Check | SCHURTER-Stock-Check | e-Store

Variants

Rated Current IEC [A]	Rated Current UL [A]	Filter-Type	Panel Thickness [mm]	Order Number
0.5	0.5	Standard Version	1	GRF4.0411.011.C
1	1	Standard Version	1	GRF4.0412.011.C
6	6	Standard Version	1	GRF4.0416.011.C
10	10	Standard Version	1	GRF4.0417.011.C
0.5	0.5	Standard Version	1.5	GRF4.0411.013.C
1	1	Standard Version	1.5	GRF4.0412.013.C
3	3	Standard Version	1.5	GRF4.0413.013.C
6	6	Standard Version	1.5	GRF4.0416.013.C
10	10	Standard Version	1.5	GRF4.0417.013.C
15	15	Standard Version	1.5	GRF4.0419.013.C
3	3	Standard Version	2	GRF4.0413.014.C
0.5	0.5	Medical Version (M5)	1.5	GRF4.0021.013.C
1	1	Medical Version (M5)	1.5	GRF4.0022.013.C
3	3	Medical Version (M5)	1.5	GRF4.0023.013.C
6	6	Medical Version (M5)	1.5	GRF4.0026.013.C
10	10	Medical Version (M5)	1.5	GRF4.0027.013.C
15	15	Medical Version (M5)	1.5	GRF4.0029.013.C

Articles with packing unit 200 (without ending ".C") are no longer available

Packaging unit

20 Pcs